

SCHOOL ARCHITECTURE

成长空间

DESIGN FOR ELEMENTARY AND
SECONDARY SCHOOLS

世界当代中·小学建筑设计

凤凰空间·北京 编



江苏人民出版社

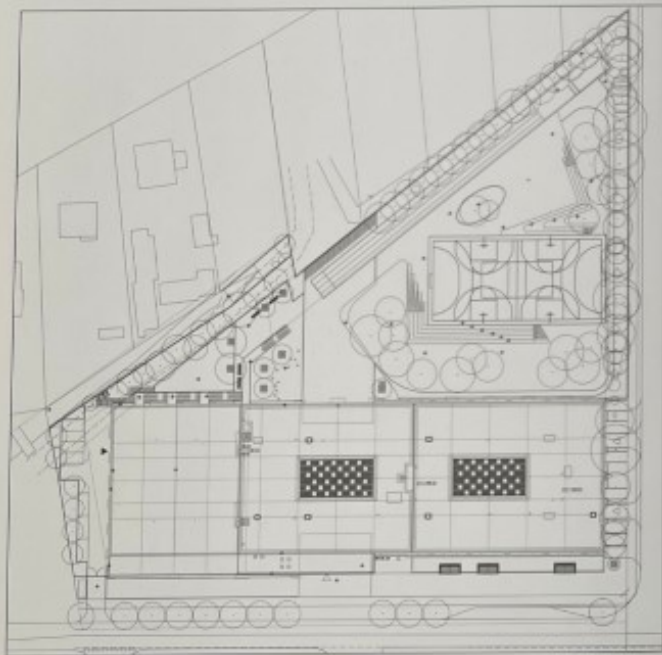


BUDAÖRS ELEMENTARY SCHOOL

匈牙利 布达厄尔什小学

项目设计: Dobai János DLA
项目地点: 匈牙利, 布达厄尔什
业主: 布达厄尔什市, Szabó Gyula,
 Ács Katalin, Gergely Katalin
总建筑面积: 12 551 m²
摄影: Bujnovszky Tamás, Tardos Tibor

Architects: Dobai János DLA
Location: Budaörs, Hungary
Client: Municipality of Budaörs, Szabó Gyula,
 Ács Katalin, Gergely Katalin
Total Floor Area: 12,551 m²
Photographs: Bujnovszky Tamás, Tardos Tibor



总平面图 SITE PLAN



匈牙利布达厄尔什小学设计了一项全国性的竞赛，以此为一所包含24间教室的建筑设计方案。尽管Dobai János DLA建筑事务所的设计方案仅以微弱优势夺得了设计合同，此项竞赛要求建筑师在一个狭窄的场地上完成整个规划。除了24间教室和其他必要的房间之外，还要为240名师生提供齐全的厨房和附属饭店，以及包含两个篮球场的运动区。

面对多个基本的限制，最终为学校确定了一种简洁而紧凑的建筑形式。建筑内部为三层的分区布局，这样的设计为户外活动留出空间。

由于场地紧张，多个楼层的主厅和停车场位于一楼（由于地下水位较浅，因此建立地下停车场是不现实的）。

建筑的第二层，位于厨房和餐厅之上，它通过更衣室区域、大厅与教

室分隔开来。

一到三层分布着朝东和朝西的教室，如讲堂、教室、办公室等均被灵活地重新分配。位于里侧的外排教室能够双向采光，可以从内部的走廊获得二次采光，建筑的联系空间、服务区和前厅区被安装在中间的一排。

主厅上方的三楼是一个与二楼相类似的中庭，它们为所在楼层的学生提供了一个室内的露天休憩空间。为建造这样一座综合楼，建筑师选用了经久耐用的天然材质：白色的灰泥、木质的表面和大量的玻璃。建筑师努力建造高质量的学生活动区域和卫生空间。教室采用了特殊的自然通风系统，并与自动遮阳设置相融合，这在匈牙利是前所未有的创新。

运动和休闲区占据了有限的户外空间，满足了学生的休闲需求。在完成了公共采购后，该项目于2006年12月动工，并于2007年9月竣工。



剖面图 SECTION

The Municipality of Sudbury City
 held a national competition for the
 design of a new elementary school with 24
 classrooms. Our proposal won third prize.
 Although our proposal was given to our office,
 the client eventually demanded an extremely
 compact design on a narrow, triangular
 site. The design included a large auditorium and the
 school's main entrance, a fully fitted hot kitchen
 and a large gymnasium for 300 people. The attached
 gymnasium included 2
 changing rooms and
 lockers.

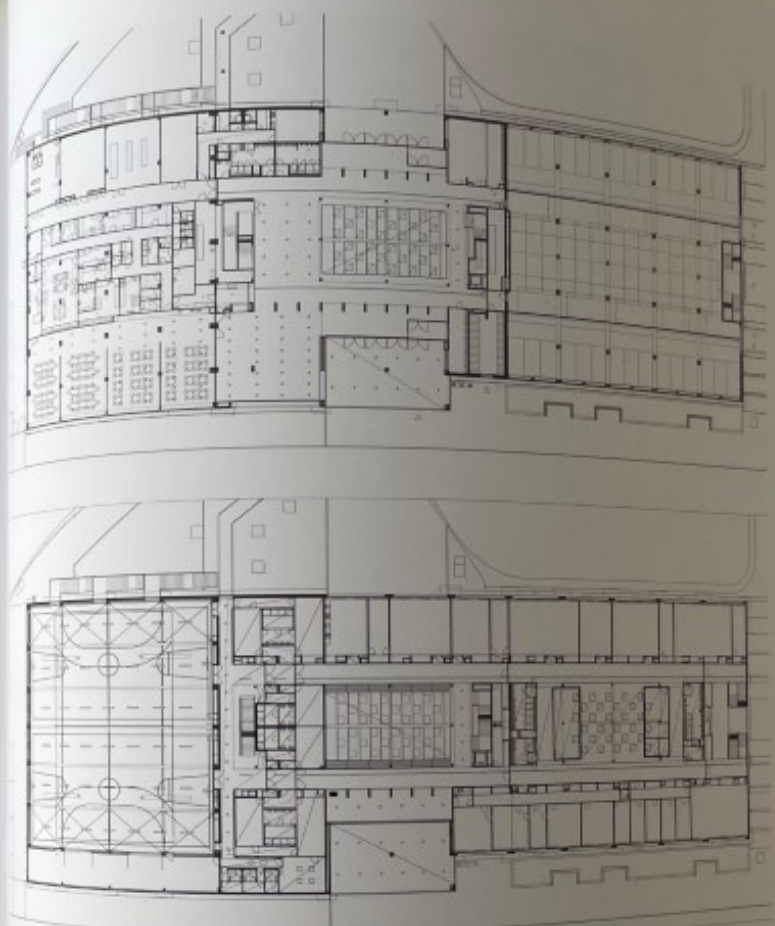
To attract more visitors, finally our
 design was a simple, compact shape
 with a central atrium building with a
 large glass facade. Thus, the most
 important design layout. Thus, the most
 important design layout.

The kitchen, the kitchen restaurant, the
 lecture hall, the high main hall and the
 auditorium. (Due to aggressive
 construction, construction of an
 outdoor space was not possible).

The kitchen, above the kitchen and the
 lecture hall, the large gymnasium was positioned,
 above the row of classrooms by the
 changing rooms and the air space of
 the atrium.

The well-being rows of first, second
 and third classrooms, such as the lecture
 hall, the main hall and offices as well, are
 included. These deep outer rows are
 illuminated by secondary light is gained
 from the atrium. Circulation spaces,
 outdoor illuminating zones are
 located in the middle row.





FBB PLAN



Above the space of the main hall, on the third floor, there is an atrium similar to the one on the second floor. These provide the students of that respective floor with a good possibility of spending the breaks still indoor but in the open air. We used natural materials to form the complex program into a building: white plaster, wooden surfaces, lots of glass - all durable. We endeavored to equip all areas of intensive student activities and to devise sanitary blocks with exceptionally good quality. We equipped the classrooms with a special, durable sanitary blocks with exceptionally good quality shading devices, unprecedented in Hungary.

Areas of sport and leisure activities articulate the limited outdoor space and serve the intensive recreation needs of the students. Having finished the public procurement process, construction began in December, 2006 and was completed in September, 2008.

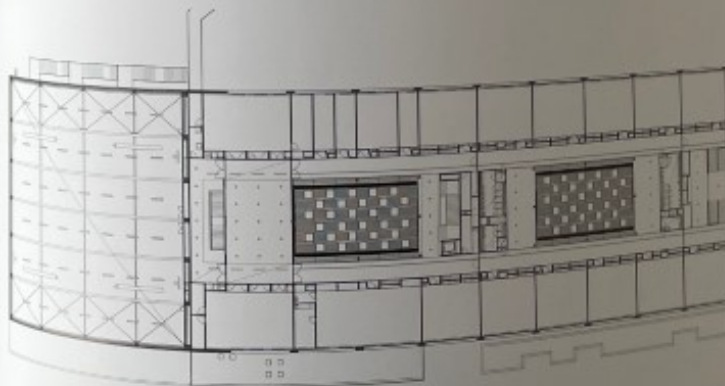
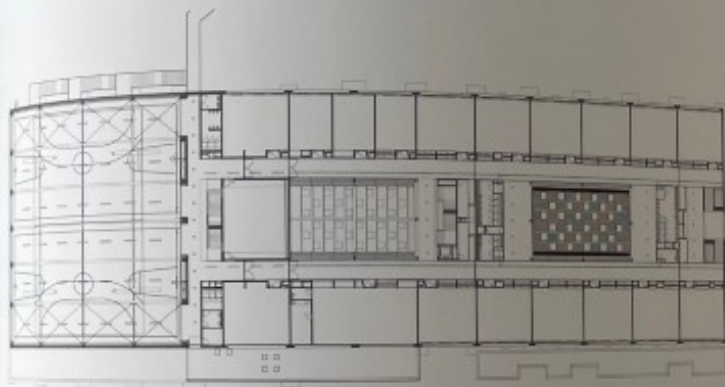
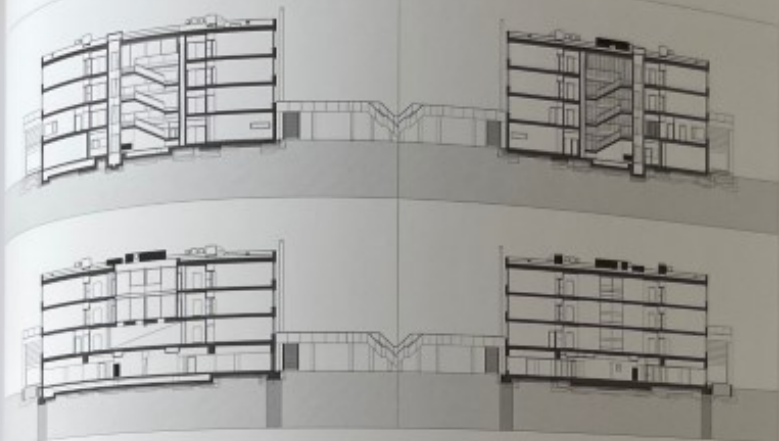


Figure 11.4



剖面详图 SECTION DETAIL



剖面 SECTION

